

## *God's ACTS 1:8 Strategy*



*But you will receive power when the Holy Spirit comes upon you. And you will be my witnesses, telling people about me everywhere—in Jerusalem, throughout Judea, in Samaria, and to the ends of the earth.*

*(Acts 1:8 NLT)*

# *One Mission...Four Strategies...Four Teams!*

## *One Mission*

*To take the Good News to those who have no life, no purpose and no family and help them find their life, purpose and family in Christ! To offer others... whether in our Jerusalem, Judea, Samaria or at the ends of the earth... a future in Him!*

## *Four Strategies*

◆ **Our Jerusalem Strategy**—*To take the Good News beyond our 4 walls, using teams of Grace’s gifts & talents & passions to extend His grace right on near our doorstep...throughout Waukesha County! [HOME TEAM]*

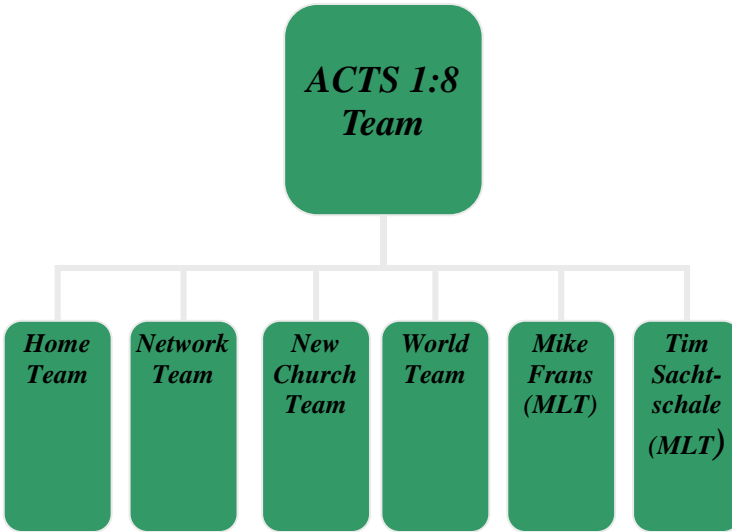
◆ **Our Judea Strategy**—*To advance the Good News by joining our hearts and hands with those of other churches and para-church ministries and collaborating in short-term opportunities to expand His kingdom in Waukesha County & Southeastern Wisconsin. [NETWORK TEAM]*

◆ **Our Samaria Strategy**—*To impact Waukesha County and beyond with the Good News by establishing and/or helping to establish new churches, a strategy of multiplying new churches which have a similar heart & DNA as that of Grace Church, yet creating new “wine skins” to hold the unchanging “Wine” as found in Jesus Christ! [NEW CHURCH TEAM]*

◆ **Our Ends of the Earth Strategy**--*To practice global outreach & pursue fulfillment of His Great Commission, beyond Wisconsin, to the ends of the earth...a strategy which includes proclaiming the Good News, making & strengthening disciples, developing new churches, & extending compassion to physical, emotional & spiritual needs by sending & supporting teams & workers (both short & long-term). [WORLD TEAM]*

## ***Four Teams***

*(Whose 4 leaders work together as a team along with 2 members of the Missional Leadership Team)*



- 1. The *Home Team***—Led by Johnna Sachtschale
- 2. The *Network Team***—Led by Randy & Rhonda Sakuma
- 3. The *New Church Team***—Led by Steve Trampe & Luis Santana
- 4. The *World Team***—Presently represented by Jamie Santana

## Questions You May Have About Our ACTS 1:8 Missions Strategy & Its Teams

- 1. You mention our outward bound mission and its teams...does that mean we have other missions as well, and if so, what are they?** That's a good question! The church of Jesus Christ, as defined and modeled throughout the New Testament, represents a mission that is like a 3-legged stool! We have our **upward bound mission**, which is worshipping the Lord with all our hearts as the community of His people. Then we have the **inward bound mission**, which involves loving one another as God's people on our discipleship journey...that lifetime process of becoming like Jesus Christ. The third leg of our mission stool is our **outward bound mission**, that evangelism side of our mission where we take His Good News and even acts of compassion to those who are lost and in need of a Forgiver and Leader. We love God, we love His people, and we love those who are lost and far from God...*with an ever-expanding heart!* When we talk about our *Acts 1:8 Missions Teams*, we're talking about the **outward bound mission** of His church...at Grace Church.
- 2. How did you arrive at the collective title (The ACTS 1:8 Missions Team) for the mission teams?** The 4 Gospels + Acts all articulate our Lord's Great

Commission, each emphasizing different aspects of His commission, such as discipleship and evangelism. The Acts 1:8 version highlights the geographical spread of the Gospel and thus its impact around the world, starting at home...and going to the ends of the earth!

**3. *Why are there 4 separate teams rather than just one?***

This is more of a strategic decision, reflecting Acts 1:8, and breaking the mission down into more manageable ones, and grouping teams according to the various gifts and passions and skill sets that will be needed for each aspect of the mission. This allows us to specialize, strategize and prioritize as the Lord provides resources.

**4. *Why is there a governing team for all 4 teams?***

Our heart's desire is to do something which churches rarely do in carrying out their outward bound missions...to promote the balance and value of every aspect of the mission, not just one arena. We also want to encourage good stewardship and fair distribution of God's provisions as all 4 teams work share those resources. Last but not least, we

want to promote creative thinking and resourcefulness as they work together, think together, pray together and together advance His mission! Having the leaders from each team serve on the governing team, along with representatives from the church's *Missional Leadership Team*, encourages the left hand to know what the right hand is doing.

5. ***Why does each team have liaisons from the Missional Leadership Team?*** This will again help the church's *Missional Leadership* (responsible for all 3 legs of our missional stool...the upward, inward, and outward bound missions) and the *ACTS 1:8 Missions Team* (representing our outward bound mission) to get off to a good start, with all teams being represented at the highest level of leadership. This will encourage effective communications and community with one another as leaders in our united pursuit of His mission!
6. ***Will we try to do all 4 strategic thrusts all at once?*** We want to have equal representation of all teams and their potential missions represented around the leadership table from day one. We fully recognize that God's time table and direction must be our priority as He leads and provides resources (both material and people). We are not

asking Him to bless our planning, but our plan is to give Him a blank page for any arena He chooses to bless at any given time, and then to sign on with our wholehearted commitment!

**7. So how will these 4 overall missions be funded? Are we allowed to pick the mission we choose and help fund it?**

The 4 missions will be funded by an *Acts 1:8 Missions Fund*—one fund supporting the 4 arenas of the outward bound mission. Over the coming year, the *Missional Leadership Team* will discuss how best to fund this strategic arena at Grace. It will then be the responsibility of the *ACTS 1:8 Missions Team* to budget for and allocate to each ministry, however the Lord provides the resources.

**8. Isn't it possible that there could be overlapping purposes among these 4 teams?**

That is very possible and likely from time to time. Great minds often think alike! That is why we will need the wisdom and decision-making from the input of the *ACTS 1:8 Missions Team* to decide where the boundary lines might fall. Each team will have overlapping purposes, such as evangelism and disciple-making, but each will have different ways in which those goals will be implemented.

**9. *Is it possible that in a smaller church that we might be trying to do more than our resources allow?***

We need to keep in mind that this strategy is laying the rail road tracks, not only for the present "train" known as Grace Church, but also the tracks for the future "trains" which will run on those tracks! We want to operate with acrostic SIBKIS...***see it big...keep it simple!*** As the Lord provides more resources, we'll be well positioned with momentum and tracks to keep going forward! One advantage of having the *ACTS 1:8 Missions Teams* working together is that they together will be able to produce reasonable timelines and timing of various projects and how they are rolled out and implemented so that we don't burn ourselves out. No matter what size we become or our mission becomes, we must remind ourselves that our mission is not a 50-yard dash, but a marathon! As the Lord provides, we will proceed

**10. *So...I'm excited about using my gifts to make a difference and I do have particular passions about where and how I might serve...is there room for me in leadership and/or being a team player? How does it all work?***

The answer is that there is room for ALL God's people to be involved in some arena of His mission! You

will have to decide where your gifts, passions, burdens, skills, experience, time availability, etc., might be best allocated, and we are here to help you in that process. For each arena of mission, we have put together a ministry description (kind of like a job description, only a ministry) which describes where each of the 4 "trains" are going...what gifts will be needed, what the expectations are, etc. After meeting with the team's leader and going over each description, you will likely narrow down where you might best serve. The first step would be to pray and ask the Lord how He might have you to serve! And then get a copy of each team's ministry description and see which arena the Lord seems to lead you towards. Then approach the leader about your interests in serving and get his/her or the team's feedback that might help you in deciding. Sometimes, leaders and teams may approach you, but if they don't, it doesn't mean you aren't wanted or needed...it may be that they just haven't met you yet in this context!

**11. How are leaders chosen for these teams?** Our church's Missional Leadership Team deliberates about potential leaders and may receive recommendations regarding potential leaders. Should you be approached to be a leader, there is a tool to

help you and us confirm whether a leadership role is a good match for you and a specific team. We have a leader's ministry job description for each team as well as a ministry description for each team to help us in the discernment process.

**12. So... what's so new about Grace's approach to her mission? I saw nothing new there!** And that's a good thing! The mission hasn't changed in 2000 years! What is new or different is our approach of being more collaborative in our mission, learning from mistakes of bygone years, and laying the foundation for a solid future!

**13. And I heard nothing about how we plan to reach the 79% who are un-churched or un-reached in Waukesha County?!** Good observation! Waukesha County is our starting point, not our ending point (thus, Acts 1:8), and to reach Waukesha County requires local outreaches by Grace, working together with other churches and groups of like mind and heart (since we could never do it alone!), and establishing

more churches all over the county to welcome those coming home... creating new venues for welcoming those who are coming home to Him and His family, and then mobilizing them to go all the way in being part of the upward, inward, and outward bound mission of His church...from Waukesha County to the ends of the earth!

14. ***What if I have more questions?!***

Always feel free to ask! As leaders, we too are on a learning curve with our new outward bound missions, and like you, we're still feeling our way around! None of us have a GPS with maps and a voice to guide us... just the simplicity of His Word...like that of Acts 1:8! Come and join us on the journey. You'll be glad you did!